



FIORENZA



Fin. A425

Grigio - Alluminio colore acciaio satinato
Gray - Anodized aluminium steel color
Gris - Aluminium anodisé coloris acier

Grau - Aluminium eloxiert Stahl Farbe
Gris - Aluminium anodizado color acero
Szary - Aluminium w kolorze stali matowe

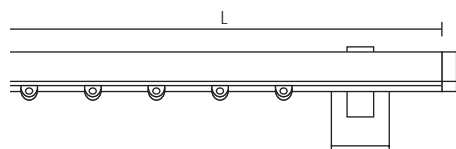


Fin. A125

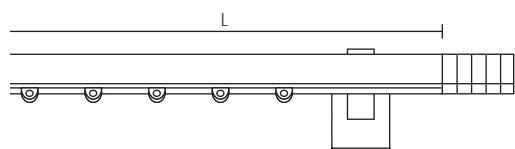
Avorio - Alluminio colore acciaio satinato
Ivory - Anodized aluminium steel color
Ivoire - Aluminium anodisé coloris acier

Elfenbein - Aluminium eloxiert Stahl Farbe
Marfil - Aluminium anodizado color acero
Kość słoniowa - Aluminium w kolorze stali matowe

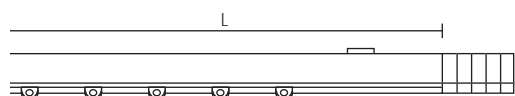
FIORENZA



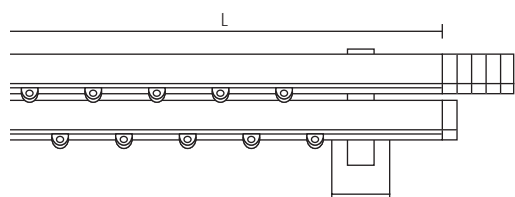
Scorritenda completo a parete
Complete curtain set
Tringle complète pose murale
Komplette Wandgarnitur
Conjunto completo a pared
Karnisz kompletny montaż do ściany



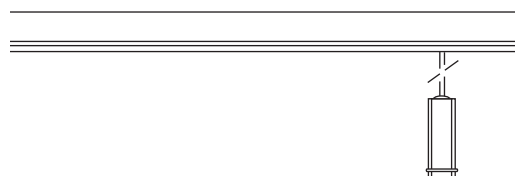
Scorritenda completo a parete
Complete curtain set
Tringle complète pose murale
Komplette Wandgarnitur
Conjunto completo a pared
Karnisz kompletny montaż do ściany



Scorritenda completo a soffitto
Complete curtain set with ceiling bracket
Tringle complète à plafond
Komplette Deckengarnitur
Conjunto completo a techo
Karnisz kompletny do sufitu



Scorritenda completo doppio a parete
Complete double curtain set
Tringle complète double pose murale
Komplette Doppelgarnitur
Conjunto completo doble a pared
Karnisz podwójny kompletny montaż do ściany



FIN. = Finitura - Finish - Finition - Fertigung - Acabado - Wykonczenie
Scor. = Scorrevoli - Runners - Glisseurs - Gleiter - Correderas - Ślizgacze
Sup. = Supporti - Brackets - Supports - Träger - Soportes - Wsporniki

Cod. 223A15

FIN	cm	120	140	160	180	200	220	250	300	340
A125 - A225 - A325 - A425										
A167 - A267 - A367 - A467										
Scor. Cod. 1000	n.	16	20	22	24	28	30	36	42	46
Sup. cm 9	n.	2	2	2	2	2	3	3	3	3

Cod. 223A05

FIN	cm	120	140	160	180	200	220	250	300	340
A125 - A225 - A325 - A425										
A167 - A267 - A367 - A467										
Scor. Cod. 1000	n.	16	20	22	24	28	30	36	42	46
Sup. cm 9	n.	2	2	2	2	2	3	3	3	3

Cod. 223S05

FIN	cm	120	140	160	180	200	220	250	300	340
A125 - A225 - A325 - A425										
A167 - A267 - A367 - A467										
Scor. Cod. 1000	n.	16	20	22	24	28	30	36	42	46
Sup.	n.	2	2	2	2	2	3	3	3	3

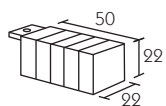
Cod. 223C05

FIN	cm	120	140	160	180	200	220	250	300	340
A125 - A225 - A325 - A425										
A167 - A267 - A367 - A467										
Scor. Cod. 1000	n.	16/16	20/20	22/22	24/24	28/28	30/30	36/36	42/42	46/46
Sup.	n.	2	2	2	2	2	3	3	3	3

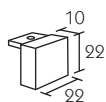
Maggiorazione movimento a corda - Surcharge for corded systems - Supplément pour tirage
Zuschlag für Schnurbedienung - Suplemento por cuerda - Dodatkowo koszt mechanizmu

cm	120	140	160	180	200	220	250	300	340
----	-----	-----	-----	-----	-----	-----	-----	-----	-----

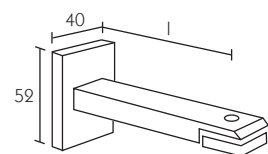
FIORENZA



223101
 Terminale
 Finial
 Embout
 Endstück
 Terminal
 Końcówka

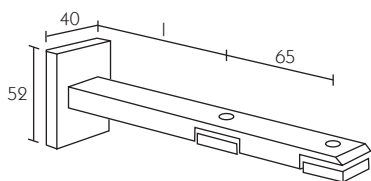


223145
 Tappo
 Endcap
 Bouchon
 Endkappe
 Tapón
 Zatyczka



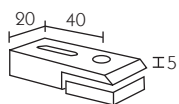
223418
 Supporto
 Bracket
 Support

Träger
 Soporte
 Wspornik



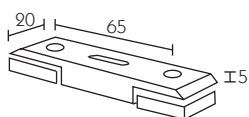
223417
 Supporto doppio
 Double bracket
 Support double

Doppelträger
 Soporte doble
 Wspornik podwójny



223997
 Supporto a soffitto
 Ceiling bracket
 Support à plafond

Deckenträger
 Soporte a techo
 Wspornik do sufitu



223998
 Supporto doppio a soffitto
 Double ceiling bracket
 Support à plafond double
 Decken-Doppelträger
 Soporte doble a techo
 Wspornik podwójny do sufitu

Cod.	223101	223145
FIN		
A125 - A225 - A325 - A425		
A167 - A267 - A367 - A467		
25		
67		

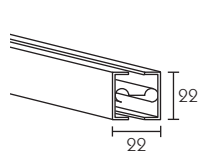
Cod.		223418	223428	223438
FIN	l - mm	90	160	210
25				
67				

Cod.		223417	223427
FIN	l - mm	90-160	160-210
25			
67			

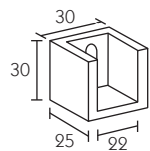
Cod.	223997
FIN	
25	
67	

Cod.	223998
FIN	
25	
67	

Components



223110
 Profilo
 Profile
 Profil
 Profil
 Perfil
 Profil



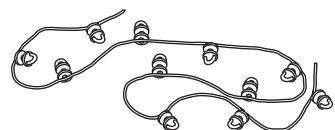
223001
 Rosetta a muro
 Recess bracket
 Naissance murale
 Wandlager
 Soporte lateral
 Podkładka do muru



1000
 Scorrevole
 Runner
 Glisseur

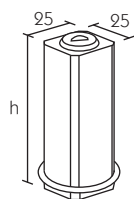


1001
 Gleiter
 Corredera
 Ślizgacze



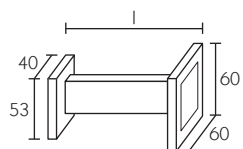
1000--
 Scorrevoli
 Runners
 Glisseurs

Gleiter
 Correderas
 Ślizgacze



5630--
 Fiocco piatto
 Flat weight
 Contrepoids plat

Schnurbeschwerer
 Contrapeso plano
 Obciążnik płaski



5130--
 Fermatenda
 Holdback
 Porte-embrasse

Raffhalter
 Alzapaño
 Przytrzymanie firanki

Cod.	223110	223001 SX / DX
FIN		
25		
67		
A1 - A2 - A3 - A4		

Cod.	1000	1001
FIN		

Cod.	1000P6*	1000P8**
FIN		
Euro/mt		

* Scorrevoli passo 60 mm - Runners each 60 mm - Glisseurs tous les 60 mm - Gleiter je 60 mm - Correderas cada 60 mm - Ślizgi co 60 mm
 ** Scorrevoli passo 80 mm - Runners each 80 mm - Glisseurs tous les 80 mm - Gleiter je 80 mm - Correderas cada 80 mm - Ślizgi co 80 mm

Cod.	563007	563008
FIN	h - mm	
25	80	100
67		

Cod.	513094	513095	513096
FIN	l - mm		
A125 - A225 - A325 - A425	100	150	200
A167 - A267 - A367 - A467			